



INDOFINE Chemical Company, Inc.

121 Stryker Lane, Bldg. 30, Suite 1 • Hillsborough, NJ 08844 • U.S.A.

Phone: (908) 359-6778 • FAX: (908) 359-1179

website: www.indofinechemical.com

e-mail: chemical@indofinechemical.com

CERTIFICATE OF ANALYSIS

Catalog number: 020535

Product name: **COUMESTROL**

Cas Number: [479-13-0]

Lot Number: 1710877

Chemical Formula: C₁₅H₈O₅

Molecular Weight: 268.22

Appearance: Cream color powder

Solubility: Soluble in DMSO

TLC: Hexane:Ethyl acetate (6:4)

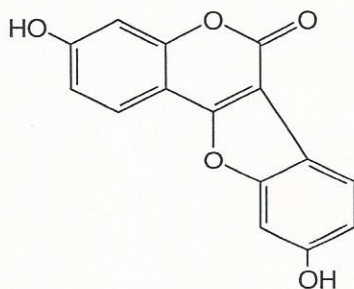
Moisture content: 0.33%

NMR Spectrum: Enclosed (Conforms to the structure)

Mass Spec: Enclosed (Complies)

Storage: Store in a cool, dry place

Purity (HPLC): 99.21%





INDOFINE Chemical Company, Inc.

121 Stryker Lane, Bldg. 30, Suite 1 • Hillsborough, NJ 08844 • U.S.A.

Phone: (908) 359-6778 • FAX: (908) 359-1179

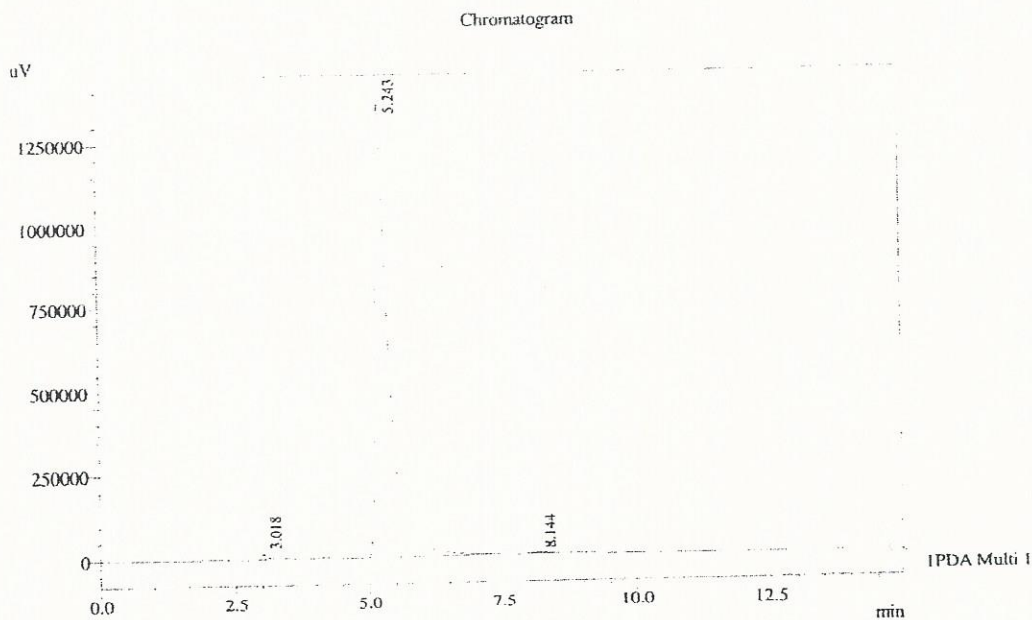
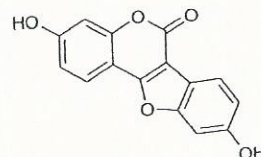
website: www.indofinechemical.com

e-mail: chemical@indofinechemical.com

HPLC ANALYSIS

Acquired by : Admin
 Sample Name : Coumestrol
 Sample ID : 4.5 g LOT
 Injection Volume : 20 uL
 Data Filename : 210817N.lcd
 Method Filename : Isocratic Method.lcm
 Report Filename : Default.lcr

Catalog No.: 020535
 Product Name: Coumestrol
 Lot No.: 1710877



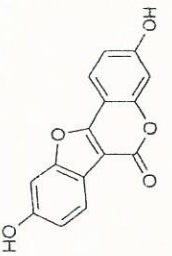
1 PDA Multi 1 / 254nm 4nm

PeakTable

Peak#	RT	Name	Ret. Time	Height	Area %	Relative Retention Time
1	3.018		3.018	16580	0.56	0.00
2	5.243		5.243	1368715	99.21	0.00
3	8.144		8.144	2892	0.23	0.00
Total				1388188	100.00	

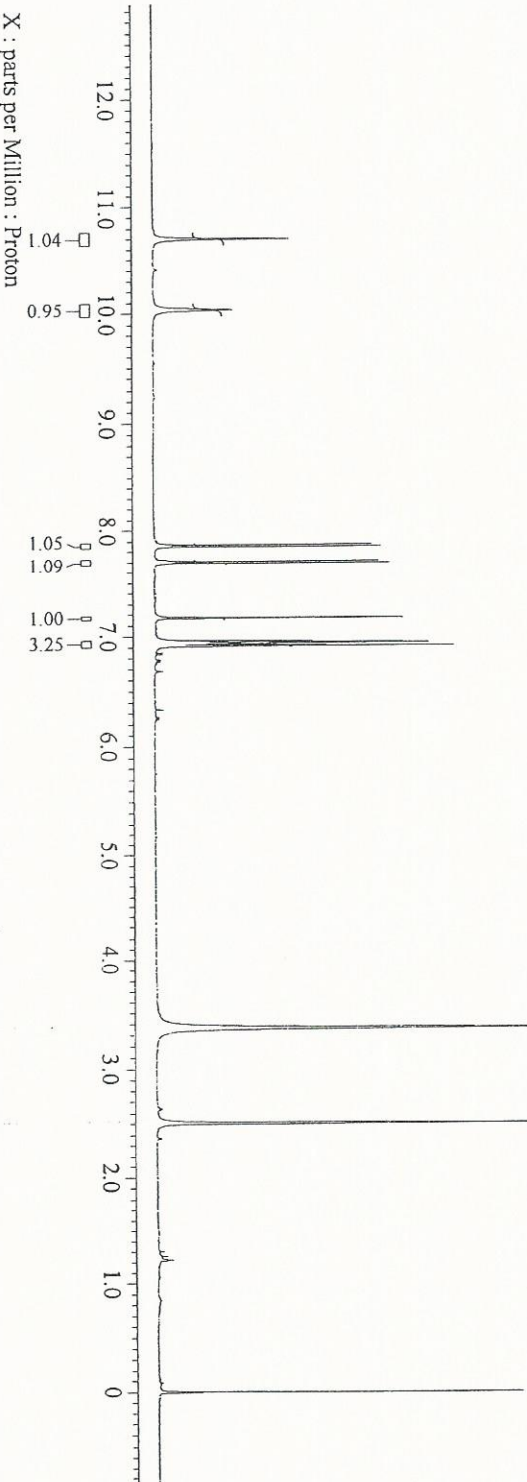
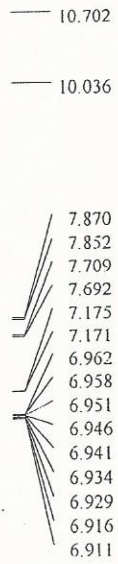


INDOFINE Chemical Company, Inc.
 121 STRYKER LANE
 BLDG. 30, SUITE 1
 HILLSBOROUGH, NJ 08844



Catalog No.: 020535
 Product Name: Coumestrol
 Lot No.: 1710877

_proton-1-2.jdt



```

----- PROCESSING PARAMETERS -----
secp ( 0.3[Hz], 0.0[s] )
trapezoid ( 0[%], 0[%], 80[%], 100[%] )
zerofill ( 4 )
ft ( 1, TRUE, TRUE )
machinphase
ppm
reference ( -0.04426[ppm], 0[ppm] )
auto_reference ( 5[%], TRUE )

```

```

Instrument      = NMR-500KHz (JBOI)
Instrument id   = NMR-02
Author         = ssr1354
Reviewed by    = Raju
Solvent        = DMSO-D6
Spectrometer   = JNM-EZ500R/S1
Experiment     = Proton.jxp

```

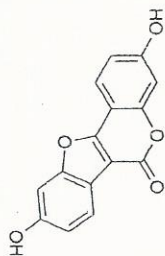
```

Acquisition Parameter
X_Domain          = 1H
X_Offset         = 7.0[ppm]
X_Sweep          = 11.2819845[kHz]
Scans            = 16
Relaxation_Delay = 2[s]

```



INDOFINE Chemical Company, Inc.
 121 STRYKER LANE
 BLDG. 30, SUITE 1
 HILLSBOROUGH, NJ 08844



Catalog No.: 020535
 Product Name: Coumestrol
 Lot No.: 1710877

_proton-1-2.jdf

7.870
7.852
7.709
7.692

7.175
7.171
6.962
6.958
6.951
6.946
6.941
6.934
6.929
6.916
6.911

```

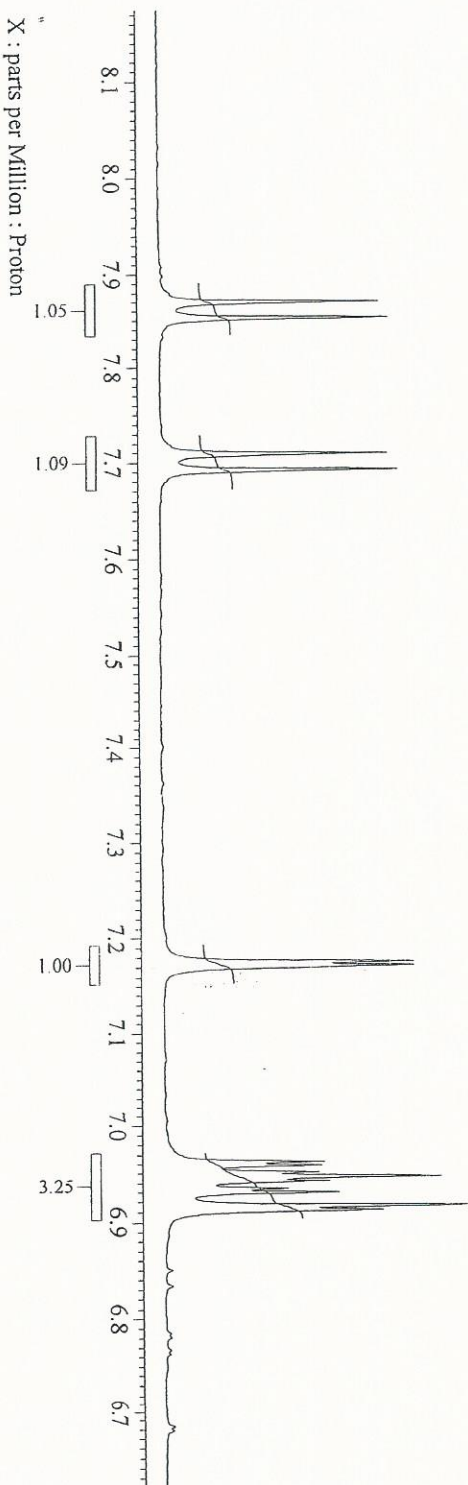
---- PROCESSING PARAMETERS ----
sexp( 0.3[Hz], 0.0[sec] )
trapzoid( 0[%], 0[%], 80[%], 100[%] )
zerofill( 4 )
fft( 1, TRUE, TRUE )
machinphase
ppm
reference( -0.04426[ppm], 0[ppm] )
auto_reference( 5[%], TRUE )
  
```

```

Instrument      = NMR-500MHz (JEOL)
Instrument id   = NMR-02
Author         = srx1354
Reviewed by    = Raju
Solvent        = DMSO-D6
Spectrometer   = JNM-ECZ500R/S1
Experiment     = proton.jxp
  
```

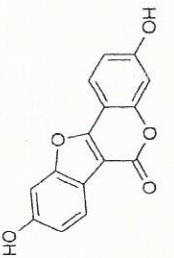
```

Acquisition Parameter
X_Domain       = 1H
X_Offset      = 7.0[ppm]
X_Sweep       = 11.28158845[kHz]
Scans         = 16
Relaxation_Delay = 2[s]
  
```





INDOFINE Chemical Company, Inc.
121 STRYKER LANE
BLDG. 30, SUITE 1
HILLSBOROUGH, NJ 08844



Catalog No.: 020535
Product Name: Coumestrol
Lot No.: 1710877

Sample Information

Method File : Test1 (ESI).len
Acquired by : Prasad
Instrument ID : LCM5-01

Probe : ESI
Polarity: Neg

MS Spectrum Graph

